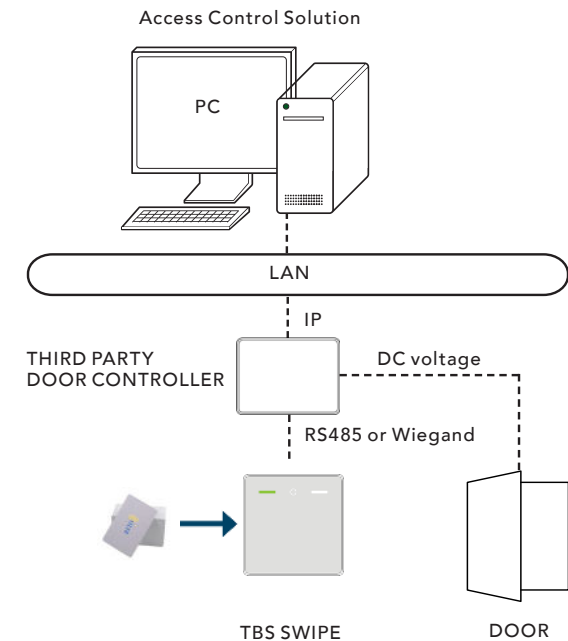


RFID READER

TBS SWIPE SQ80

TBS SWIPE SQ80 authenticates classic RFID cards. Add it as card reader to your access control solution, or connect it to the TBS Biometric System to equip access points where the customer prefers a low-cost reader instead of the high security of biometric readers.

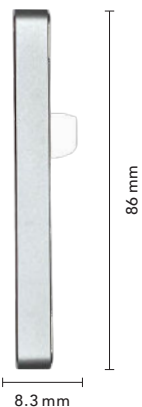
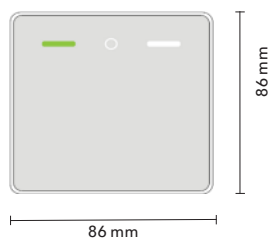
- Multi-tech RFID reader:
Mifare UL/Classic/DESFire
Legic Prime/Advant
- Connected to any third party controller via RS485 (OSDP) or Wiegand
- Connected to TBS CONTROLLER SMART via RS485 (OSDP), up to 4x SWIPE to one controller
- IP65 weather protection
- Reader Mode (no write mode)
- Compact Flush and Wall Mount Design
- 5 Year Warranty



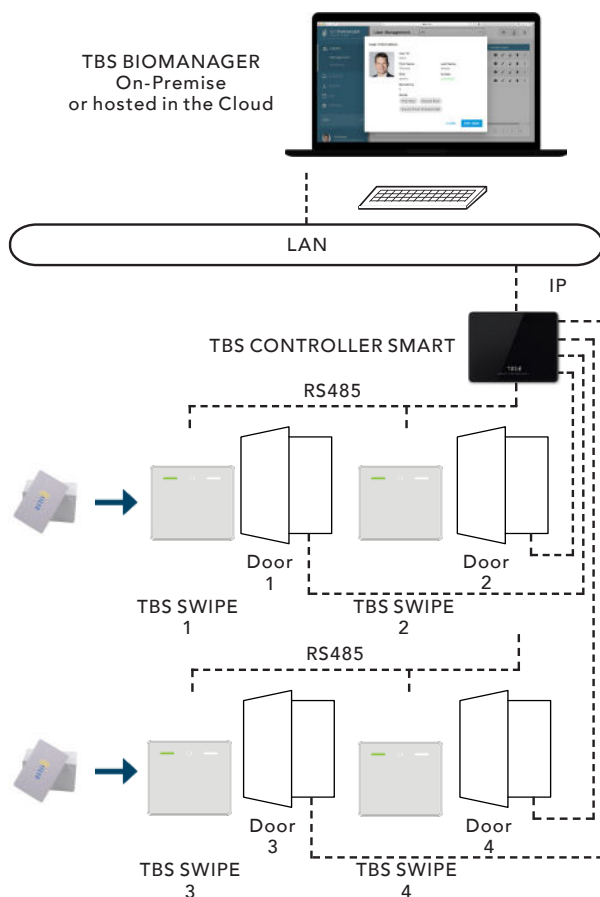


TBS SWIPE SQ80

Dimensions



Architecture when connected to TBS Biometric System



Technical Specifications

Operating Frequency	125 kHz 13.56 MHz: ISO14443 types A & B, ISO15693
RFID / NFC	HF (13.56 MHz): Legic Prime/Advant, Mifare UL/Classic/DESFire
Connectivity	OSDP (v2.2) via RS485, Wiegand
Reading Distance	RFID: up to 60 mm (depending on environment and transponder) Up to 10m with a Bluetooth smartphone
Signalling	Visual signalling: RGB LEDs Audio signalling: Internal buzzer with adjustable intensity
Data Protection	AES128 (secured communication between reader & controller) Secure data storage in EAL6+ certified crypto chip
Tamper Switch	Magnetic tamper detection
Housing Material	Polycarbonate UL94-V0 & UL746C (F1) UV Stability: No structural degradation in 3 years Reinforced vandal-proof structure IK10 certified
Certifications	CE, FCC, RoHs3.0, WEEE, UL294 Weather & dust protection compliant with IP65
Mounting	Wall-mount door installations or any flat surface mounting
Environment	Operating temperature -20°C to 60°C
Power Supply	6 to 28 VDC
Dimensions	H x W x D = 86 x 86 x 8.3 mm