



## RFID READER

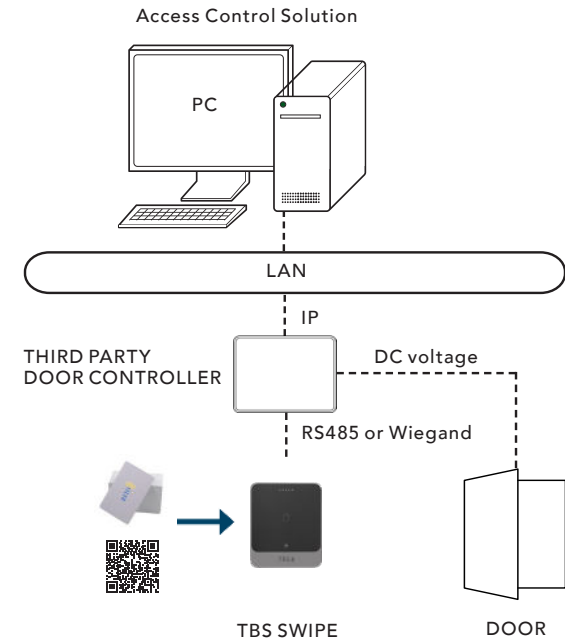
# TBS SWIPE EP20

TBS SWIPE EP20 authenticates classic RFID cards. Add it as card reader to your access control solution, or connect it to the TBS Biometric System to equip access points where the customer prefers a low-cost reader instead of the high security of biometric readers. TBS SWIPE EP20 supports QR code scanning.

- Multi-tech RFID reader:
  - MIFARE Classic/DESFire
  - HID iClass
  - Low frequency cards
- Connected to any third party controller via RS485 (OSDP) or Wiegand
- Connected to TBS CONTROLLER SMART via RS485 (OSDP), up to 4x SWIPE to one controller
- IP68 water & dustproof
- Reader Mode (no write mode)
- Compact Wall Mount Design
- 5 Year Warranty



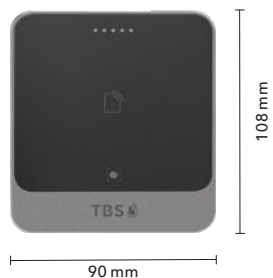
tbs-biometrics.com



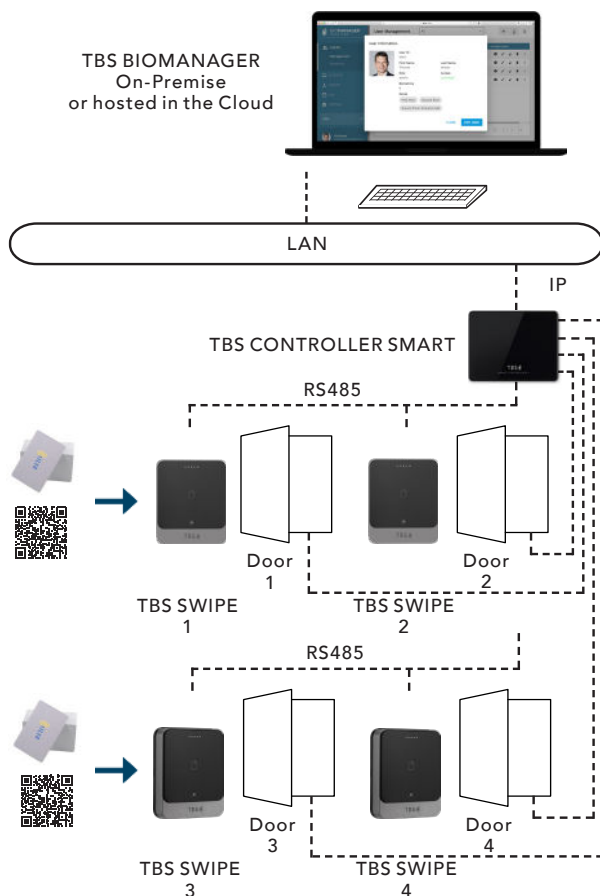


# TBS SWIPE EP20

## Dimensions



## Architecture when connected to TBS Biometric System



Touchless Biometric Systems AG  
 Rietbrunnen 2  
 8808 Pfaeffikon SZ  
 Switzerland  
 tbs@tbs-biometrics.com  
 www.tbs-biometrics.com

## Technical Specifications

Operating Frequency	125 kHz 13.56 MHz: ISO14443 types A & B, ISO15693
RFID / NFC	MIFARE Classic, MIFARE DESFire MIFARE UL compliant
Connectivity	OSDP (v2.2) via RS485, Wiegand
Reading Distance	RFID: up to 60 mm (depending on environment and transponder) Up to 10m with a Bluetooth smartphone
QR CODE Reading	<b>Supported</b>
Signalling	Visual signalling: RGB LEDs Audio signalling: Internal buzzer with adjustable intensity
Data Protection	AES128 (secured communication between reader & controller) Secure data storage in EAL6+ certified crypto chip
Tamper Switch	Magnetic tamper detection Polycarbonate UL94-V0 & UL746C (F1)
Housing Material	UV Stability: No structural degradation in 3 years Reinforced vandal-proof structure IK10 certified
Certifications	CE, FCC, RoHs3.0, WEEE, UL294 Weather & dust protection compliant with IP68
Mounting	Wall-mount door installations or any flat surface mounting
Environment	Operating temperature -30°C to 70°C
Power Supply	9 to 24 VDC
Dimensions	H x W x D = 108 x 90 x 24 mm